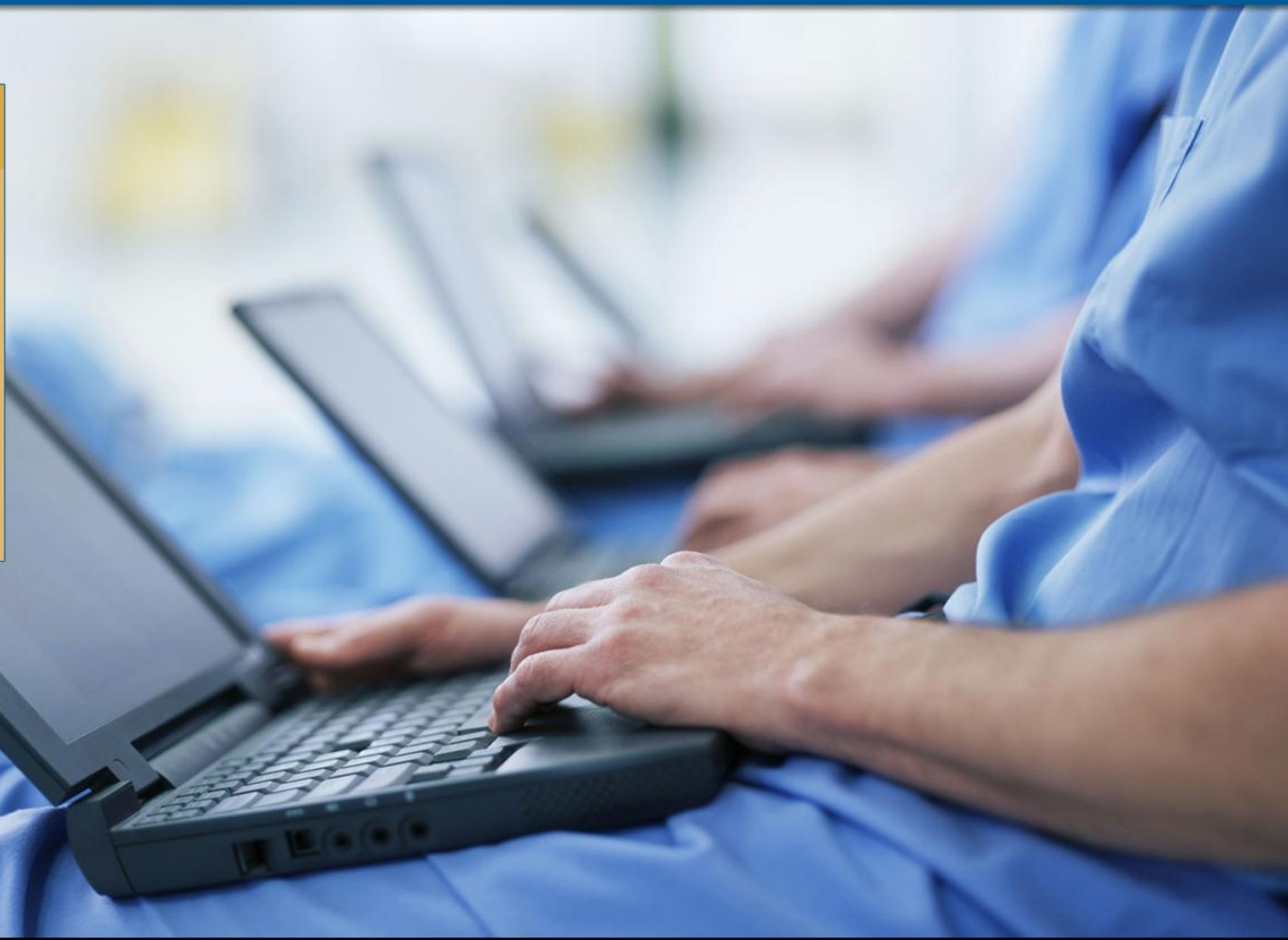




HiTech Workforce Forum

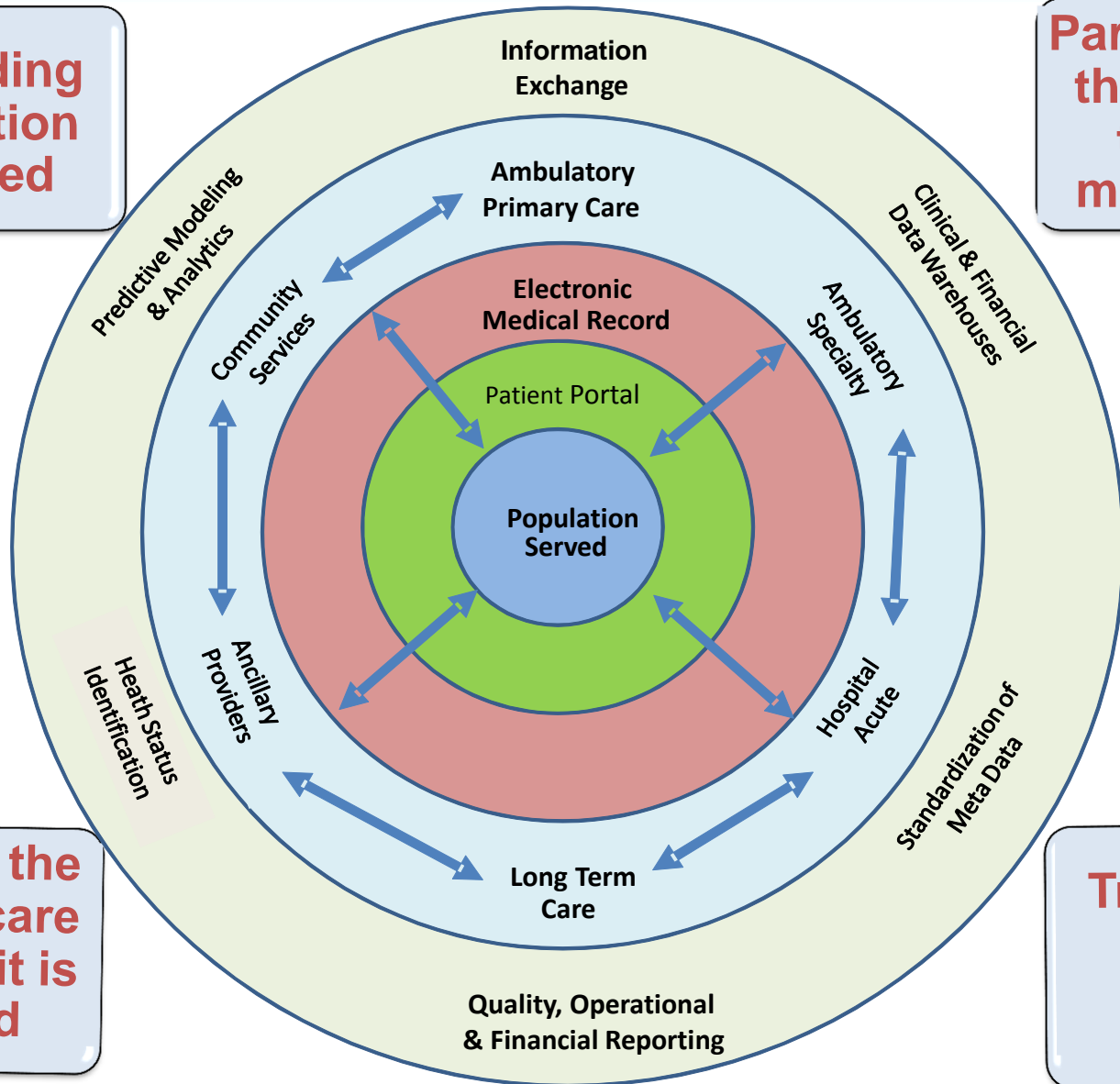
***Accountable
Care Issues &
Opportunties***



Accountable Care Foundational Elements

Understanding the population to be served

Partnering with the patient in their care management



Managing the patient's care wherever it is received

Transforming data into knowledge

CMS Demonstration Project

Loosely aligned patient & provider model

No lock in of patients to providers in tight network.

Providers of care do not share risk.

Reimbursement on a fee for service basis.

HIMSS Proposed Definition

Tightly aligned patient & provider model

Lock in of patients to a integrated network of providers.

Care coordinated across continuum.

Providers share financial risk.

Fixed payment amount, not per encounter payment.



Technology Impact Care Delivery & Financing

Selected ACO Requirements	CMS Model 	HIMSS Model
Organizational Strategy & Structure <ul style="list-style-type: none"> ➤ Care Centered on Patient Populations ➤ Creating cohesive Provider Organizations 		
System & Technical Requirements <ul style="list-style-type: none"> ➤ Revenue Cycle & Claims Management ➤ EMR systems across care continuum ➤ Health Information Exchange ➤ Business Intelligence 	 	
Partnering with the Patient <ul style="list-style-type: none"> ➤ Chronic Illness Tools & Registries ➤ Patient Portal, Proxy Access to Record 	 	
Knowledge Management <ul style="list-style-type: none"> ➤ Data Warehousing ➤ Predictive Modeling & Analytics 	 	



Implications for HealthCare Work Force

Key skill sets that will be highly valued in era of accountable care.

- 1. Holistic understanding of clinical care.**
- 2. Systems based thinking.**
- 3. Business intelligence orientation.**
- 4. IT technical skill sets.**
- 5. Clinical training and patient care focus.**
- 6. Vendor specific certification and expertise,**